



It's like paper, only better

PolyPattern Design Pro

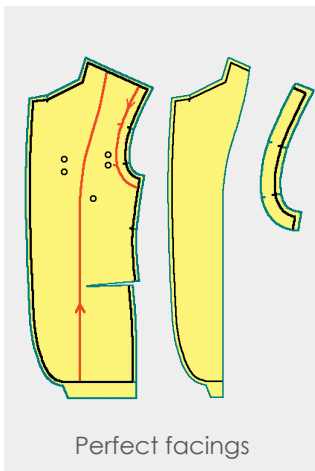
True efficiency in pattern making and product development is achieved when

- 1) pattern construction and revisions are accomplished quickly and
- 2) pattern data is ready for production when product samples are approved.

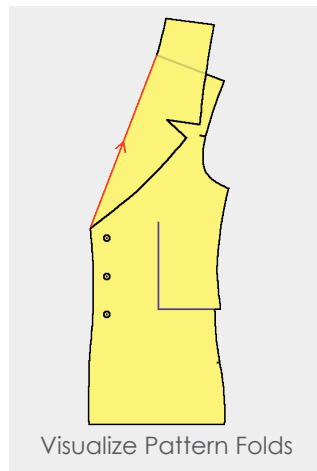
The only effective way to optimize the pattern making process is to **develop patterns directly in your CAD system.**

95% of PolyPattern users NEVER make patterns by hand.

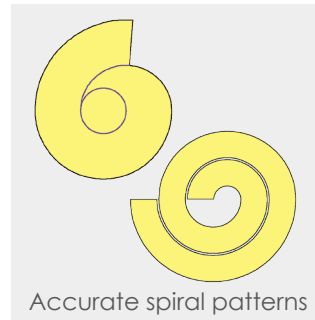
PolyPattern's thoughtfully designed tools, combined with its unique "snaps" and keyboard input, enable you to make correct patterns with the **greatest speed, accuracy, control, and unbelievable ease.** The result is a simple clean working environment with features you can access. You'll use all of PolyPattern's features to efficiently develop and revise patterns, because you'll know how to.



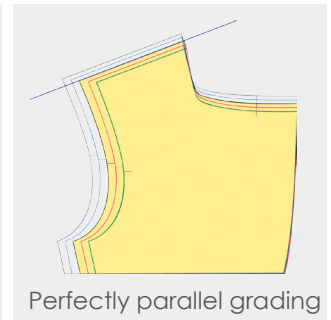
Perfect facings



Visualize Pattern Folds



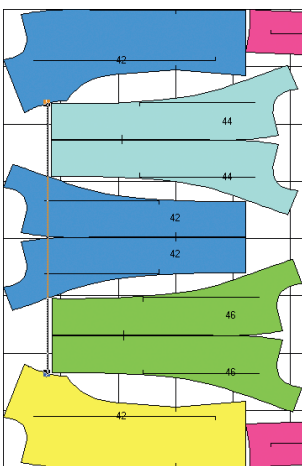
Accurate spiral patterns



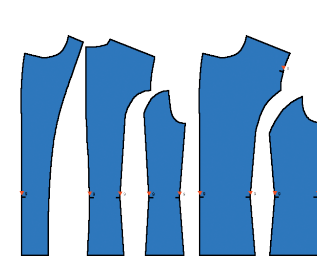
Perfectly parallel grading



Parameterized Seams & Corners



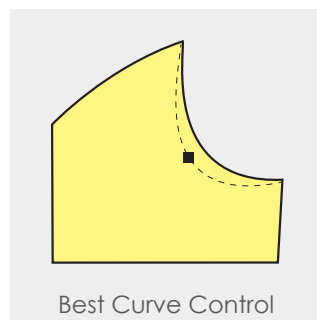
Use match rules to handle fabric motifs.



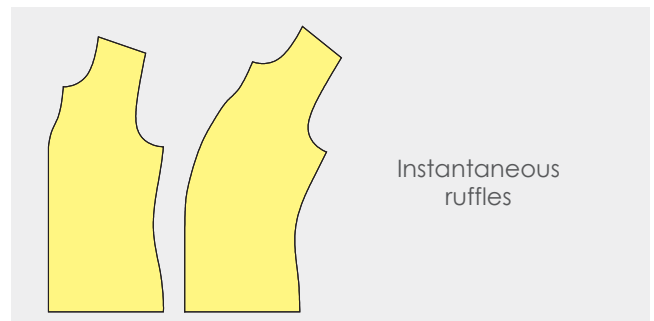
Instantaneous ruffles



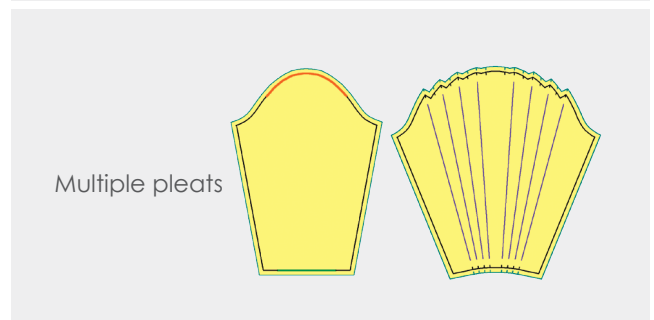
Grow "parallel"



Best Curve Control



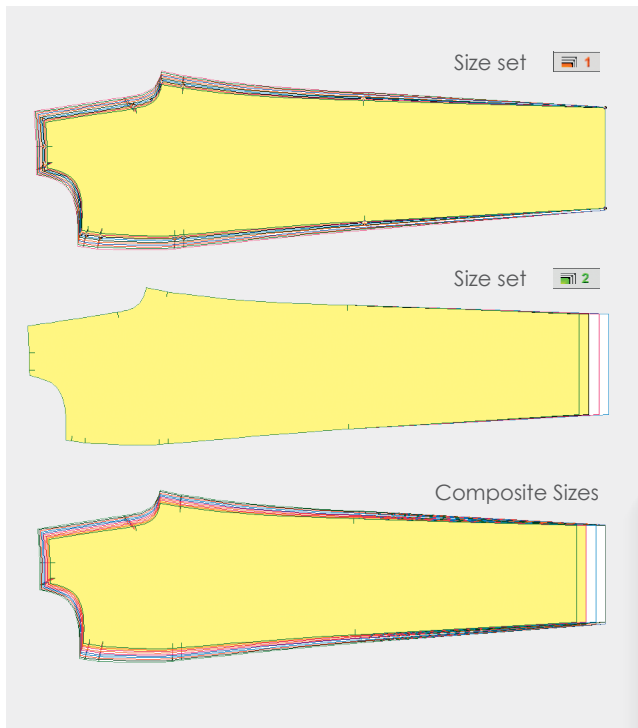
Multiple pleats



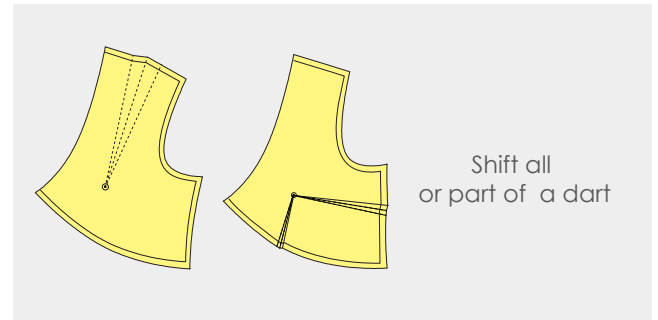
Multiple pleats

It's like paper, only better

Since 1990, PolyPattern customers have enjoyed higher productivity.



Easily manage drop sizes



	XS	S	M	L	XL	XXL
BACK						
Chest	20.00	21.00	22.00	23.00	24.00	25.00
Shoulder	9.98	10.49	11.00	11.51	12.02	12.53
Neck Opening	7.18	7.34	7.50	7.66	7.82	7.98
Waist	18.00	19.00	20.00	21.00	22.00	23.00
Armhole	16.49	17.00	17.51	18.02	18.53	19.05
Hip	19.25	20.25	21.25	22.25	23.25	24.25
Neck Drop	2.50	2.50	2.50	2.50	2.50	2.50
Length	59.00	59.50	61.50	62.00	63.50	64.00
SLEEVE						
Bicep	14.50	15.25	16.00	16.75	17.50	18.25
Sleeve Opening	11.50	12.00	12.50	13.00	13.50	14.00
Length	30.00	30.00	30.00	30.00	30.00	30.00
FRONT						
Chest	20.00	21.00	22.00	23.00	24.00	25.00
Shoulder	9.98	10.49	11.00	11.51	12.02	12.53
Neck Opening	7.18	7.34	7.50	7.66	7.82	7.98
Waist	18.00	19.00	20.00	21.00	22.00	23.00
Armhole	16.49	17.00	17.51	18.02	18.53	19.05
Hip	19.25	20.25	21.25	22.25	23.25	24.25
Neck Drop	8.50	9.00	9.50	10.00	10.50	11.00
Length	59.00	59.50	61.50	62.00	63.50	64.00

Create a pattern dimension table

**Maximum productivity in pattern making:
do more things in fewer steps.**

**Optimized sample room processes:
graded patterns are ready for production when samples are approved.**

**Accurate fabric costing and fabric orders:
costing markers are built on actual pattern data.**

**Reliable pattern data exchange with partners:
direct interface with other CAD systems, applications, and a wide range
of machines.**

